

Southeast Corner Parkview and Holmgren Way

SALE



SALE

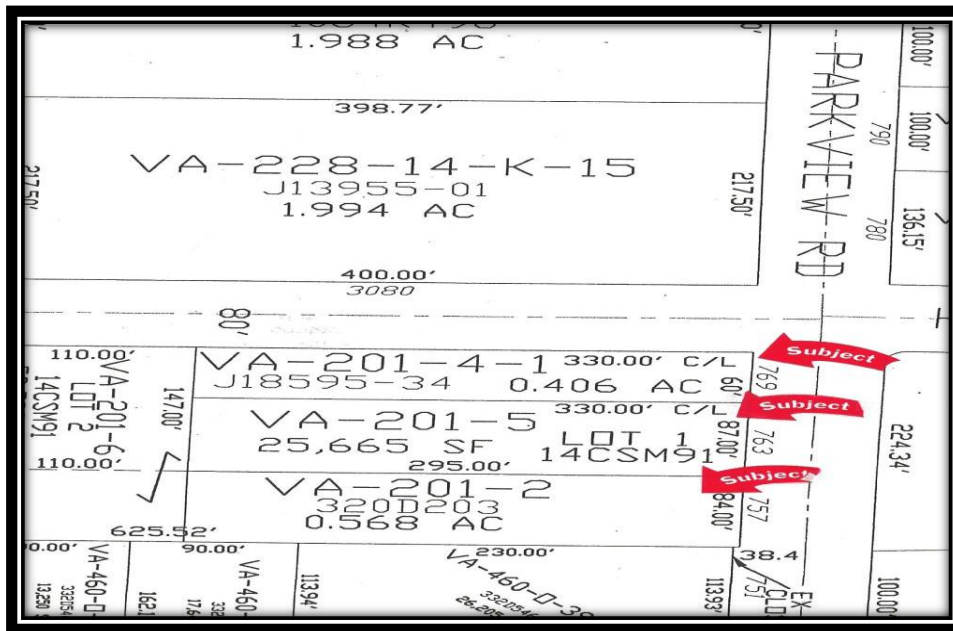
VANDER ZANDEN REAL ESTATE CO., LLC
COMMERCIAL REAL ESTATE

920-437-9797

SITE

Three commercial lots totaling 1.56 acres with total frontage of 295 feet on Holmgren Way and 231 feet on Parkview Road in the southern part of Ashwaubenon. Owner will consider dividing into 3 parcels. Located ¼ mile from highway 41 and Ashland Avenue. Ideal for wholesale, retail, office or light manufacturing.

IMPROVEMENTS



DESCRIPTION

Currently zoned for industrial, but can be rezoned.

2011 Real Estate Taxes: \$2,390.40

Tax Parcel #: VA-201-2, VA 201-5 and VA 201-4-1

ASKING \$160,000.00

www.vanderzanden.net